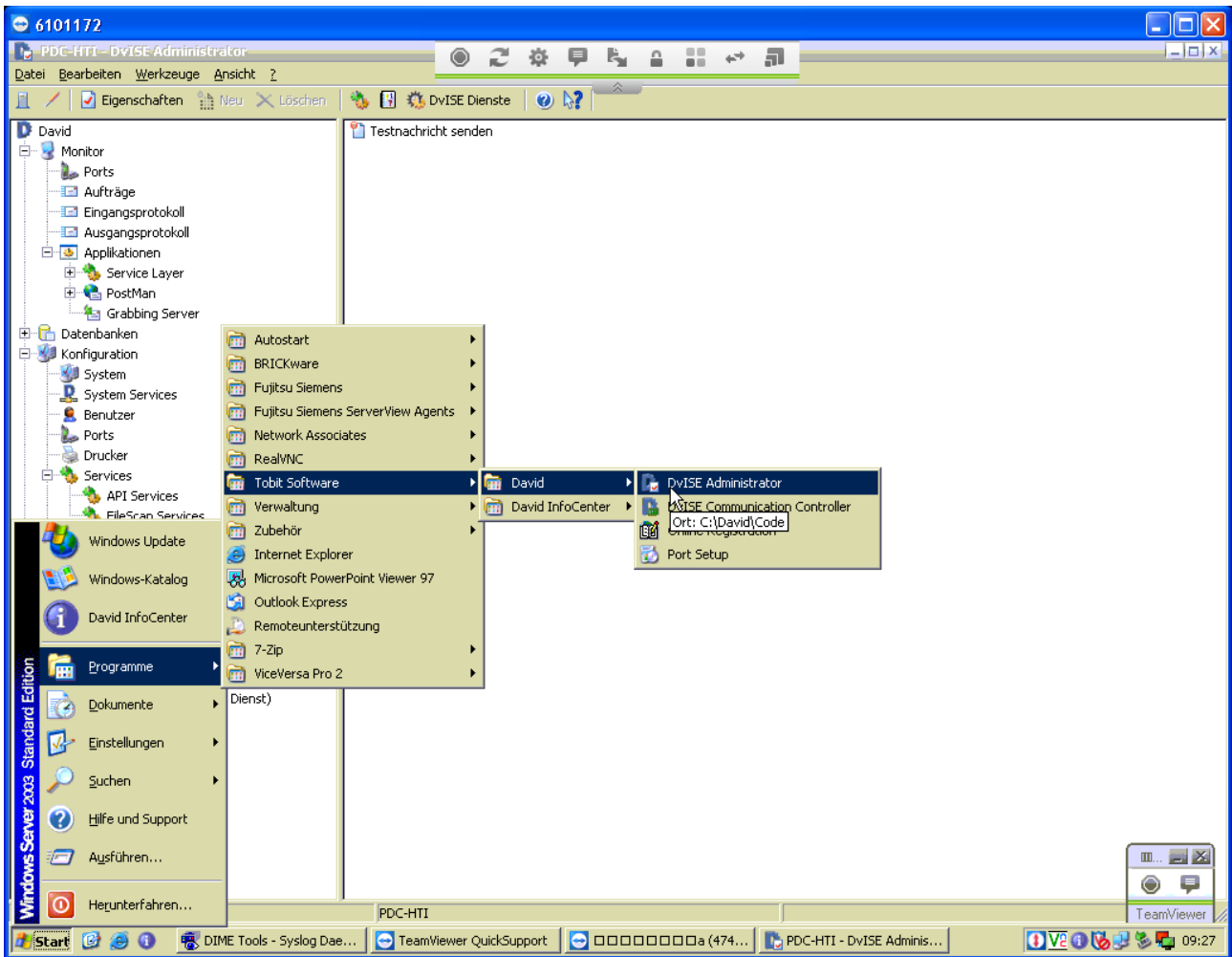


Auf dem Server DvISE Admin starten



oben DvISE Dienste anklicken

The screenshot shows the DvISE Administrator interface. On the left is a tree view with categories like Monitor, Ports, Aufträge, and Testfunktionen. The 'Testfunktionen' category is expanded, showing 'Testnachricht senden' selected. In the center, a 'DvISE Dienste' window is open, displaying a table of services. The table has three columns: 'DvISE Dienst', 'Status', and 'Startart'. Below the table are buttons for 'Starten', 'Beenden', 'Neu starten', and 'Schließen'. The taskbar at the bottom shows the Start button, several open applications, and the system clock at 09:26.

DvISE Dienst	Status	Startart
Clipinc 001	Beendet	Manuell
Discussion Server	Beendet	Manuell
Grabbing Server	Gestartet	Automatisch
Host	Beendet	Manuell
Mail Access Server	Beendet	Manuell
PBXxpense	Beendet	Manuell
PostMan	Gestartet	Automatisch
Replica	Beendet	Manuell
Service Layer	Gestartet	Automatisch
Show Interface Services	Beendet	Manuell
TLD 001	Gestartet	Automatisch
TVIndex	Beendet	Manuell
Video Capture	Beendet	Manuell
WebBox	Beendet	Manuell

in DvISE Dienste alle markieren und dann auf „Neu starten“ klicken

